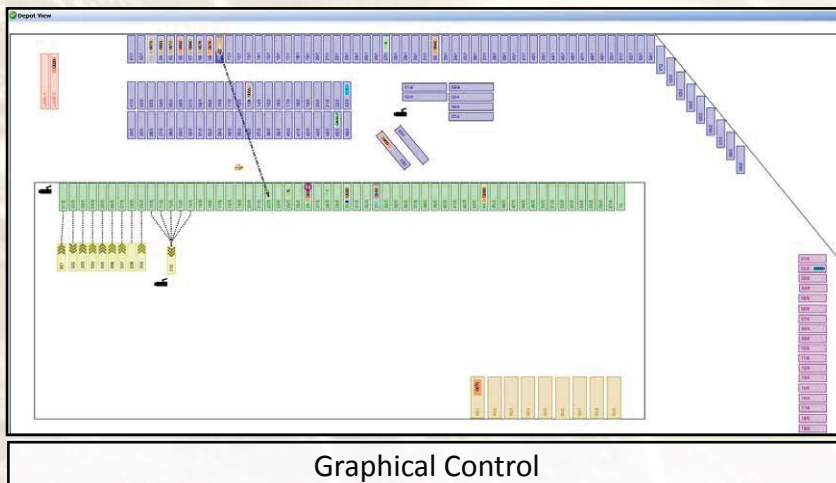


Yard and Dock Management Solution

Trans-D is a complete Yard & Dock Management System developed in Australia by Sonar Technologies to address important operational issues that occur daily in transport sites. With an emphasis on safety, security and regulatory compliance, Trans-D provides a full visibility and control of yard operations in real-time: managing Docks Trailers, Prime Movers, Trucks and Vans. Trans-D delivers operational efficiencies and productivity increases through optimum asset utilisation and manpower.



Security:

- Trans-D tracks all movements and records seals so that they can be scanned upon arrival, ensuring the load has not been tampered with.
- The system can include camera feeds to allow visibility of the site.
- Dock lights can be monitored and trailers not moved until the green light is given.

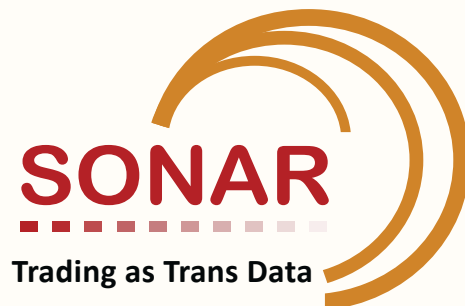
Safety factors on the road

Line Hauls play an important role in moving the freight between depots. Tracking the arrival and departure and the freight being carried allows loading and unloading to be scheduled and monitored to ensure timely movement of the freight. Checking the service history, type of trailer and how it is loaded is of paramount importance for the safety of the driver, the vehicle and its contents. Trans-D not only monitors this, but provides tracking of the vehicle to warn of its arrival so that the driver can be told via an arrival monitor where to park.

Paperwork such as an RCTI can be produced as the source data is in the system.



Trans-D



Scalability

The system is scalable to allow it to be used in both large and small depots and still provide all the benefits to the smaller operation and budget.

Visibility

They say a picture tells a thousand words and with our graphical presentation of the depot you will have total visibility of your operation in real time.

Free Consultancy

Sonar will review your operations and challenges to see how Trans-D can aid your business in a free no obligation meeting.

Call **02 9630 3533** to arrange an appointment.

Optimisation

The Tug Mobile App directs the driver by the optimum route taking into account the depot traffic rules and scheduling. The aim is to improve the efficiency of movements around the yard.

The Scheduler provide the means to pre-plan operations and to have the system generate the necessary tasks automatically and assign them as required.

Using the LPA tablet App dock workers can record how a trailer is loaded so that upon arrival at the other end it can be assigned to the correct dock.

Modules:

- Yard Manager
- Scheduler
- Trailer Overview
- Job Overview
- Security
- Configuration
- Maintenance
- Tug Application
- LPA Application
- Security Gate Application

Sonar Technologies Australia Pty Ltd

Level 2, Building 3, 35-41 Waterloo Rd
Macquarie Park NSW 2113 Australia
Phone: +61 2 9630 3533
Fax: +61 2 9630 3780
Web: www.sonartechnologies.com
Email: sales@sonartechnologies.com

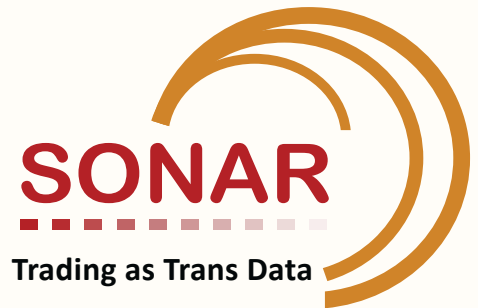
Sonar Technologies Partnering with Key Management Group, Inc

125 Baylis Road, Suite #260 Malville NY
11747 USA
Phone: +1 631 777 2424
Fax: +1 631 777 2626
Web: www.kmgus.com

Development office:

Sonar Softtech (India) Private Limited
1136, Tower B3, Spaze I Tech Park,
Sohna Road, Sector 49.
Gurgaon-122002 Haryana.
India

Trans-Send



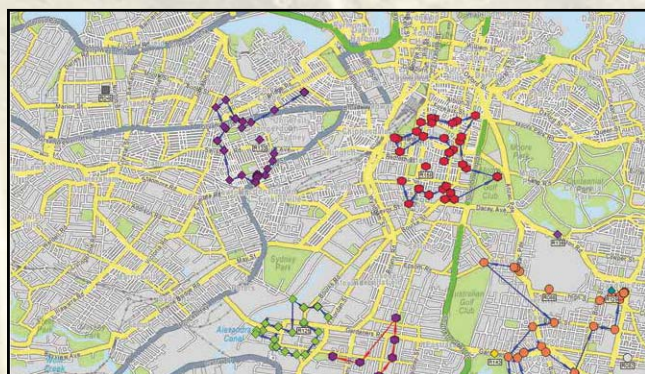
A flexible and user configurable Transport Management Solution



Configurable Modules



iOS & Android Integration



Intelligent Run Planning

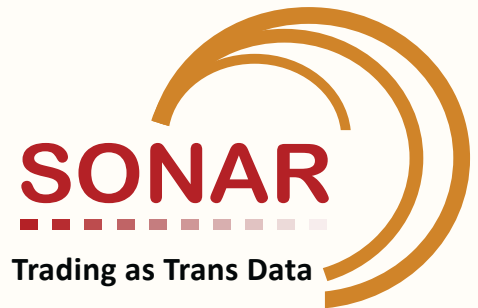
Integrated management solution built to enhance the productivity of any transport and logistic operation.

Manages both casual & permanent Pickups & Deliveries. Optimises runs & routes, using auto - allocation to minimise operator tasks.

Modules include:

- Web Booking Module
- Customer Account Management
- High Volume Assisted Job Booking
- Permanent Job Management
- Auto Job Generation
- Run Management & Planning Manager
- Route Optimisation and Auto-scheduler
- Visual Dispatch linked to Map Dispatch
- Map Scheduling and Auto-Dispatch
- Resource and Vehicle Management - including GPS Tracking
- Configurable Rules Engine for Auto allocation
- Customizable Reporting Module
- Customer access to web reporting and job tracking
- OH&S and Driver Safety Management
- Mobile device real-time communication
- Direct interfaces to any back end system
- Integrates to Trans-D, Yard & Dock management & Line Haul system
- Integrates to sortation systems via LARS

Trans-Send



CH1-NSW

Drag a column header here to group by that column

Icon	Run#	Stops	Jobs	Items	Weight	Volume	Max Jobs	Max Vol	Max Weight
	R003	0	0	0	0/100	0/100	100	100	100
	R004	56	57	188	57/100	57/100	100	100	100
	R005	0	0	0	0/100	0/100	100	100	100
	R006	0	0	0	0/100	0/100	100	100	100
	R008	0	0	0	0/100	0/100	100	100	100
	R009	0	0	0	0/100	0/100	100	100	100
	R010	0	0	0	0/100	0/100	100	100	100
	R011	0	0	0	0/100	0/100	100	100	100

Selected Run (R004) Jobs

Drag a column header here to group by that column

Seq	Status	Connote Qty	Qty	Weight	Volume	Duration	Ready Time	Default Ru...	Job #
1	Allocated	1	1	1.00	1.00	4	00:01	R172	3184352
2	Allocated	1	1	1.00	1.00	4	00:01	R172	3198635
3	Allocated	1	1	1.00	1.00	4	00:01	R172	3183565
4	Allocated	1	1	1.00	1.00	4	00:01	R172	3177889
5	Allocated	1	1	1.00	1.00	4	00:01	R073	3179020
6	Allocated	9	9	1.00	1.00	4	00:01	R073	3192488
7	Allocated	3	3	1.00	1.00	4	00:01	R073	3189044
8	Allocated	1	1	1.00	1.00	4	00:01	R073	3191287
10	Allocated	4	4	1.00	1.00	4	00:01	R073	3185224
11	Allocated	1	1	1.00	1.00	4	00:01	R073	3168132
12	Allocated	1	1	1.00	1.00	4	00:01	R073	3172448
13	Allocated	1	1	1.00	1.00	4	00:01	R073	3172449
14	Allocated	5	5	1.00	1.00	4	00:01	R073	3175958
15	Allocated	4	4	1.00	1.00	4	00:01	R073	3176718

Full Visibility of Every Run

Delivery Overview, Version:6.2.16047.7750

Customize

Jobs:	Items:	Jobs:	Items:	Jobs:	Items:
RUN 2-41	1000/0(0)/0	RUN R08 2-08	100/0/0	RUN 2-20	100/0/0
RUN R11 2-11	100/73(0)/0	RUN R09 2-09	100/110/0	RUN 2-21	100/0/0
RUN R01 2-01	100/105/0	RUN 2-12	100/1/0	RUN 2-22	100/0/0
RUN R02 2-02	100/86/0	RUN 2-13	100/0/0	RUN 2-23	100/0/0
RUN R03 2-03	100/88/0	RUN 2-14	100/0/0	RUN 2-24	100/0/0
RUN R04 2-04	100/0/0	RUN R10 2-10	100/100/0	RUN 2-25	100/24/0
RUN R05 2-05	100/138/0	RUN 2-16	100/100/0	RUN 2-26	100/0/0
RUN R06 2-06	100/34/0	RUN 2-17	100/0/0	RUN 2-27	100/0/0

Monitoring of Your Operations

Benefits

- Work flow automation through mobile devices
- Elimination of errors through removal of paper
- Barcode/RFID tracking
- Proof of delivery
- Track and Trace
- Automated job generation and dispatching
- Option to run manual, semi-auto or full auto-allocation allows dispatchers to progressively build confidence
- Real time visibility of resources and assets
- Vehicle Tracking
- Easy run management with flexible re-planning as the business grows
- Fast calculation of day to day fleet requirements allows planning of changes to the fleet size
- OH&S & vehicle checks increases safety
- Reporting – real-time visibility of productivity and profitability
- System is fully scalable and can handle both small and very large fleets

Sonar Technologies Australia Pty Ltd

Level 2, Building 3, 35-41 Waterloo Rd
Macquarie Park NSW 2113 Australia
Phone: +61 2 9630 3533
Fax: +61 2 9630 3780
Web: www.sonartechnologies.com
Email: sales@sonartechnologies.com

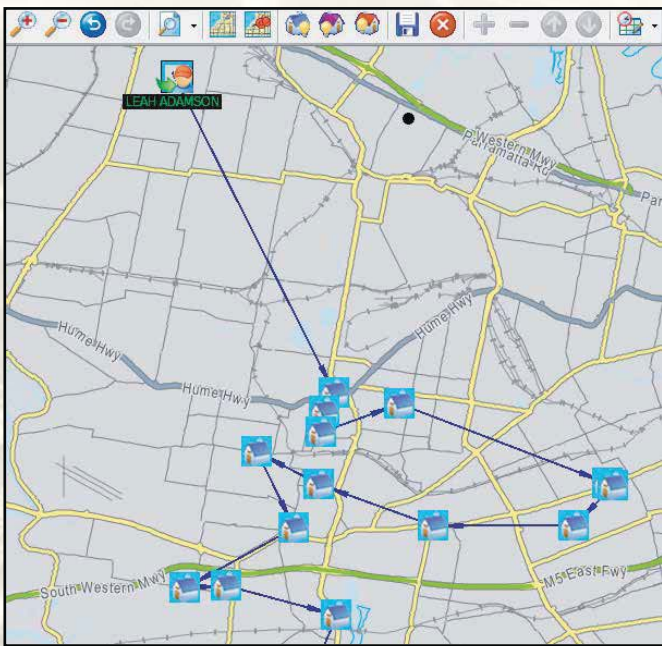
Sonar Technologies Partnering with

Key Management Group, Inc
125 Baylis Road, Suite #260 Malville NY
11747 USA
Phone: +1 631 777 2424
Fax: +1 631 777 2626
Web: www.kmgus.com

Development office:

Sonar Softtech (India) Private Limited
1136, Tower B3, Spaze I Tech Park,
Sohna Road, Sector 49.
Gurgaon-122002 Haryana.
India

A Field Service Workforce Management Solution

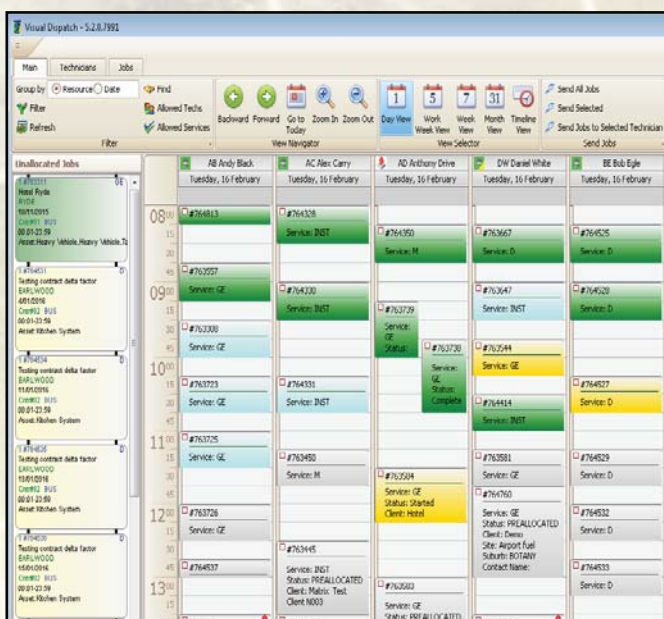


Create perfect routes in seconds to maximise productivity

Integrated mobile resource management solution built to enhance the productivity of any service industry operation. Modular configuration tailored for customers specific needs. Seamless Integration with CRM/ERP to bring the enterprise to the field force.

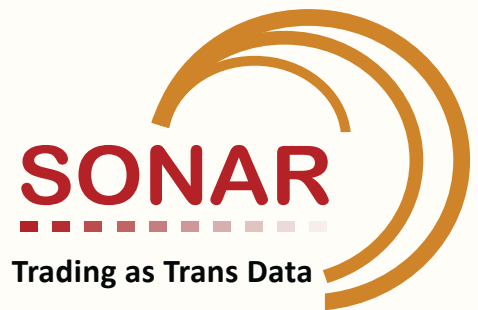
Modules include:

- Customer/Site/Location/Asset Management
- Contract Management
- Job Planning Management
- Route Optimisation and Auto-scheduler
- Auto Job Generation and Real Time Management
- Resource and Vehicle Management – including GPS Tracking
- Visual Asset/Warehouse/Inventory Management
- Invoice/Debtor Accounting Management
- Map Scheduling and Dispatch
- Custom Reporting Module
- Customer access to web reporting and job tracking
- Mobile device real-time communications
- Direct interfaces to any back end system – SAP, Oracle, MYOB



Easy Control and Monitoring of Work

Trans-Service



Multi-leg Journey Management



iOS & Android Integration

Vehicle ID	State	Service Type	Date	Time	Status	Location
757474	NSW	BUSINESS	3/03/2015	0	General	
757474	NSW	BUSINESS	8/07/2014	0	General	
757474	NSW	BUSINESS	8/07/2014	0	General	
757474	NSW	RESIDENTIAL	8/07/2014	0	General	1
757474	NSW	RESIDENTIAL	8/07/2014	0	General	1
757474	NSW	BUSINESS	3/03/2015	0	General	1
757474	NSW	BUSINESS	11/06/2014	0	General	1
757474	NSW	BUSINESS	3/03/2015	0	General	1
757474	NSW	BUSINESS	3/03/2015	0	General	1
757474	NSW	BUSINESS	3/03/2015	0	General	1
757474	NSW	BUSINESS	17/11/2014	0	General	1
757474	NSW	BUSINESS	17/11/2014	0	General	1
757474	NSW	BUSINESS	17/11/2014	0	General	1
757474	NSW	BUSINESS	26/11/2013	0	General	1
757474	NSW	RESIDENTIAL	3/03/2015	0	Monitoring	1
757474	NSW	BUSINESS	18/11/2013	0	Monitoring	1
757474	NSW	RESIDENTIAL	26/05/2014	0	Monitoring	1
757474	NSW	BUSINESS	25/02/2015	0	General	1
757474	NSW	BUSINESS	25/02/2015	0	General	1
757474	NSW	BUSINESS	25/02/2015	0	General	1
757474	NSW	BUSINESS	3/03/2015	0	General	1
757474	NSW	BUSINESS	3/11/2014	0	Monitoring	1
757474	NSW	BUSINESS	17/11/2014	0	General	1
757474	NSW	BUSINESS	25/02/2015	0	General	1

Cloud offering

Benefits

- Work flow automation through hand held / mobile devices
- Proof of service delivery
- Automated job generation and dispatching
- Real time visibility of resources and assets
- Skill matching and route optimisation
- Billing, invoicing via hand held devices
- Optimum territory planning and resourcing
- Reporting – real time visibility of productivity and profitability

Verticals

- Hygiene
- Laundry
- Pest Control
- Fire Equipment and Safety
- Plumbing/Electrical
- Equipment Rental
- Maritime Certification
- Telecommunications
- Health Care and Hospitals
- Air-conditioning

Sonar Technologies Australia Pty Ltd

Level 2, Building 3, 35-41 Waterloo Rd
Macquarie Park NSW 2113 Australia
Phone: +61 2 9630 3533
Fax: +61 2 9630 3780
Web: www.sonartechnologies.com
Email: sales@sonartechnologies.com

Sonar Technologies Partnering with Key Management Group, Inc

125 Baylis Road, Suite #260 Malville NY
11747 USA
Phone: +1 631 777 2424
Fax: +1 631 777 2626
Web: www.kmgus.com

Development office:

Sonar Softtech (India) Private Limited
1136, Tower B3, Spaze I Tech Park,
Sohna Road, Sector 49.
Gurgaon-122002 Haryana.
India